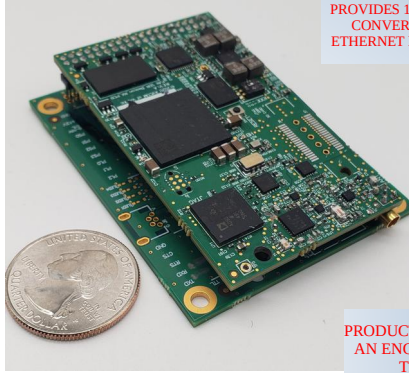


SA-MOD-1

L-Band Spectrum Analyzer Module



SHOWN WITH OPTION CARRIER BOARD WHICH PROVIDES 12v TO 5V DC CONVERTER AND ETHERNET MAGNETICS

PRODUCT SOLD IN AN ENCLOSURE TBD

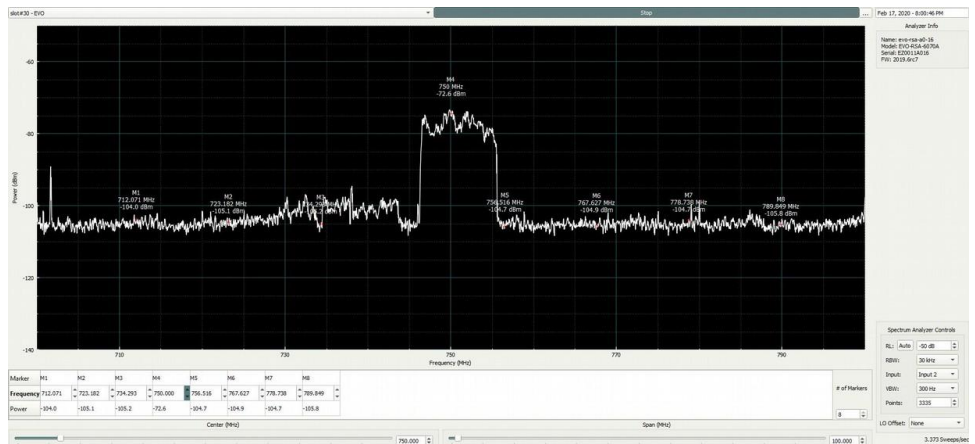
- Software-Defined-Radio SDR
- Compact, Rugged Design
- Monitoring & Control (M&C) via Ethernet
- Integrates with Avcom's EVO-GUI or Comprehensive API
- Extended Temperature Range
- Low SWaP (Size, Weight, and Power)

The SA-MOD-1 spectrum analyzer is based on Avcom's software-defined-radio technology platform designed to exceed today's performance challenges. The analyzer is intended for embedded applications required to operate under challenging conditions.

Avcom's newest analyzer technology provides excellent performance by employing high-performance DSP, and FPGAs. Users can now embed a full-function spectrum analyzer in a volume previously not accessible for rugged environments.

Communication with the module is achieved via ethernet and Avcom's Graphical User Interface; the EVO GUI software. It provide a feature-rich set of functions to control, monitor & alarm, while recording and data-logging. The system can also be accessed via a POSIX-Compliant API, available from Avcom.

"Following the Signal", and listening to our customers, this series is perfectly suited to provide functionality in earthstations, teleports, and RF signal monitoring environments. The MOD Series of Analyzers is an excellent addition to the Avcom family of products for demanding applications which require the extended performance characteristics, while still providing a low cost-of-ownership and a highly cost-effective and reliable product



TECHNICAL SPECIFICATIONS

PARAMETER	PERFORMANCE
FREQUENCY RANGE	950-2150 MHz
SPAN WIDTH	1200 MHz
RESOLUTION BANDWIDTH	1kHz, 3kHz, 10kHz, 100kHz, 300kHz, 1MHz
REFERENCE LEVELS	Selectable: -10dBm to -40dBm in 5dB increments
SPURIOUS FREE DYNAMIC RANGE	60dB
AMPLITUDE ACCURACY	±1dB typical
SCALE PER DIVISION	2dB/div, 5dB/div
USABLE INPUT RANGE	-100dBm to -10dBm
FREQUENCY ACCURACY	±1kHz typical
MAXIMUM RF INPUT	25VDC Max (DC blocked); -10dBm
INPUT IMPEDANCE	50Ω
RF INPUT CONNECTOR	MMCX, SMA
INTERFACE CONNECTORS	TBD
POWER SUPPLY REQUIREMENT	12-28 VDC; 2.5W
PHYSICAL DIMENSIONS (BOARD; ENCLOSED)	2" x 3"; TBD
HUMIDITY	0 to 95%, non-condensing
TEMPERATURE RANGES; OPERATING/STORAGE	-40 to +70 °C / -50 to +85 °C

Specifications subject to change. ©2020 Avcom of Virginia, Inc. Rev-Prelim v2020.11